

West Area Planning Committee Presentation

www.oxford.gov.uk



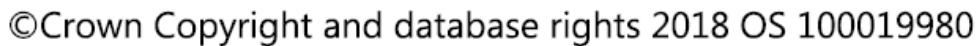
18/0896/FUL & 18/00897/LBC

Student Accommodation at The Mitre

165



166





Existing entrance to Turl Yard

www.oxford.gov.uk



View within Turl Yard

169



www.oxford.gov.uk



Rear of The Mitre Building

www.oxford.gov.uk



Location of existing plant



www.oxford.gov.uk



View Over Covered Market



172

www.oxford.gov.uk



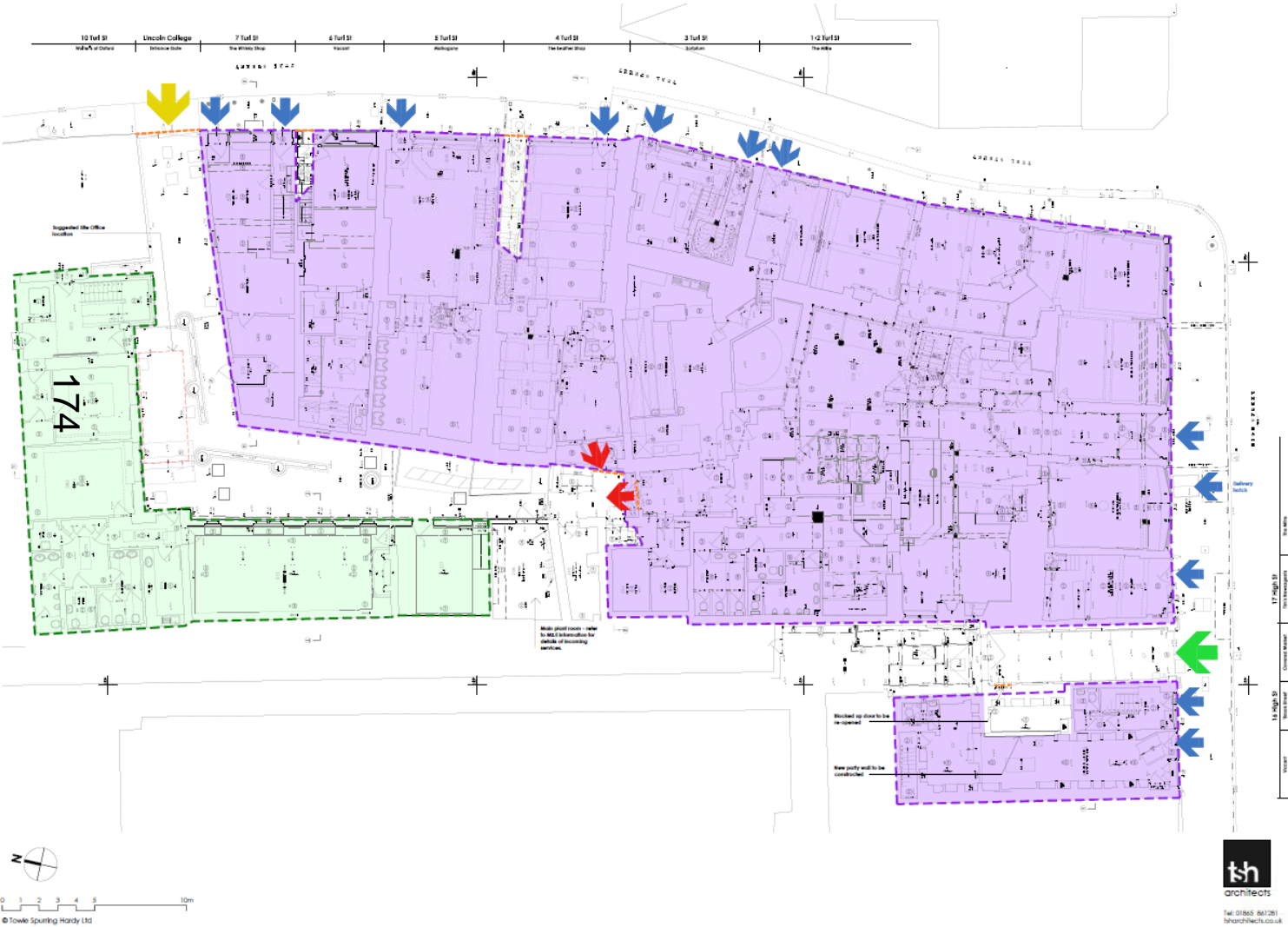
Doorway to be reopened as a fire escape



www.oxford.gov.uk



Existing Site Plan



www.oxford.gov.uk



Tel: 01865 647281
tharchitects.co.uk

Architectural floor plan of Lincoln College showing proposed roof removal and new dormer additions. The plan includes various rooms, corridors, and structural elements. Red cross-hatched areas indicate roof removal, and blue-outlined areas indicate new dormers. A large section on the left is labeled '175'. Annotations include 'Roof may need partial or full removal of slates', 'New dormer', and 'Tiled roof to be stripped off and renewed with new felt, battens and tiles'. The plan is oriented with a north arrow pointing towards the top right.



Existing elevations - streets



EAST ELEVATION (THE MITRE)

1-2 Tull St The Mitre 3 Tull St Subjunct 4 Tull St The Leather Shop 5 Tull St The Gallery 6 Tull St The Gallery 7 Tull St The Gallery 8 Tull St The Gallery 9 Tull St The Gallery 10 Tull St The Gallery

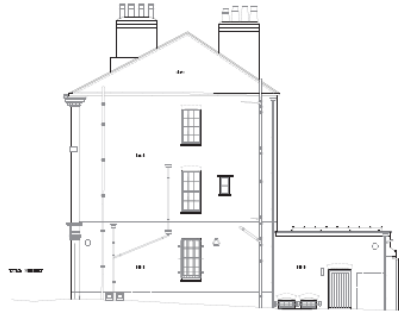


SOUTH ELEVATION (THE MITRE)

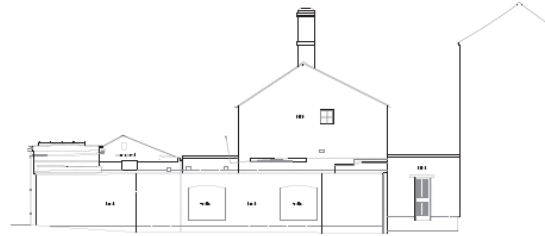


Existing elevations – Zone A Courtyard

www.oxford.gov.uk

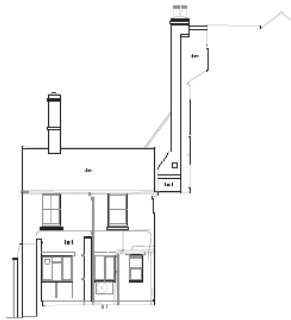


NORTH ELEVATION (COURTYARD)



WEST ELEVATION (COURTYARD)

177



SOUTH ELEVATION (EXTERNAL COURTYARD)



WEST ELEVATION (COURTYARD & LIGHTWELL)

0 1 2 3 4 5 10m
© Towle Spurring Hardy Ltd



Tel: 01865 861281
info@tharch.co.uk

Existing elevations – Zones B & C Courtyard

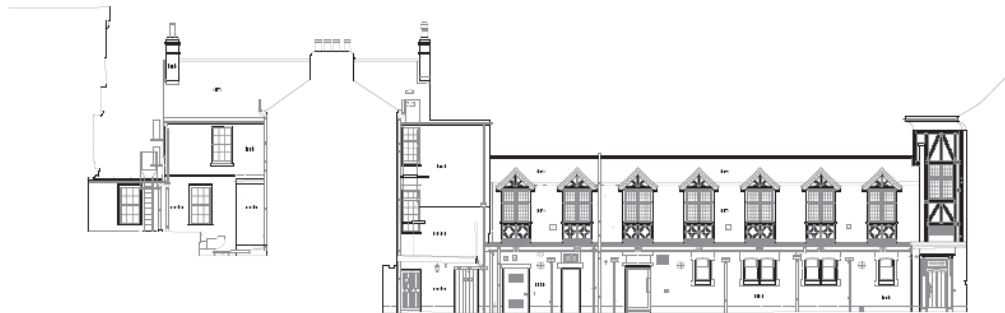
www.oxford.gov.uk



NORTH ELEVATION (COURTYARD)



SOUTH ELEVATION (COURTYARD)



EAST ELEVATION (COURTYARD & HIGHWELL)



Existing elevations – Zones B & C Lightwells

www.oxford.gov.uk



NORTH ELEVATION (LIGHTWELL)



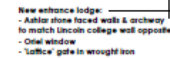
SOUTH ELEVATION (LIGHTWELL)



WEST ELEVATION (COURTYARD)



www.oxford.gov.uk



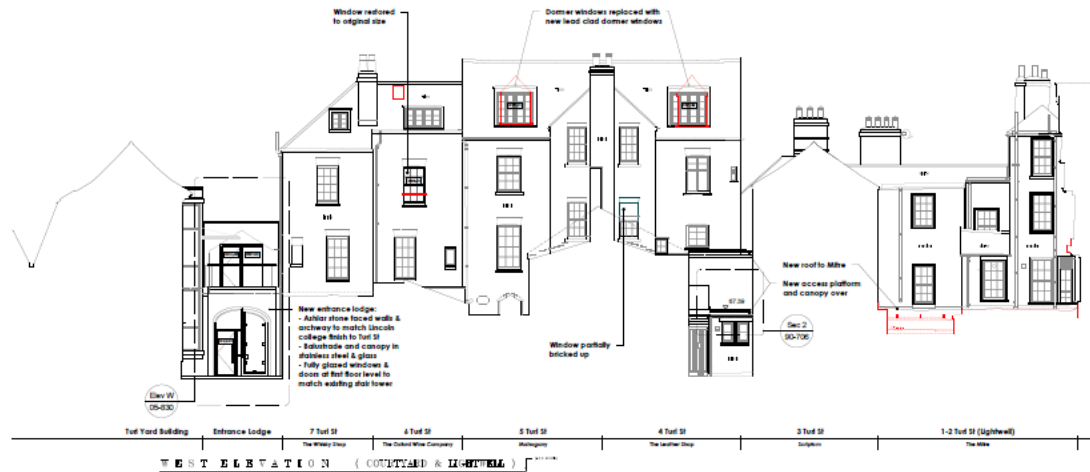
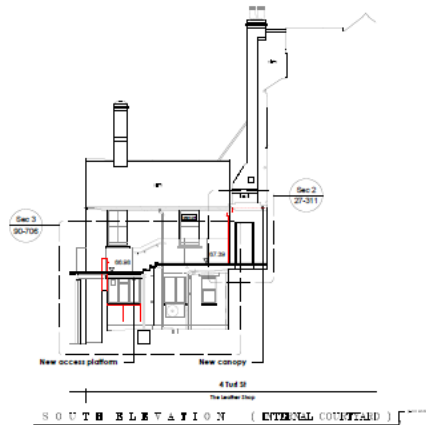
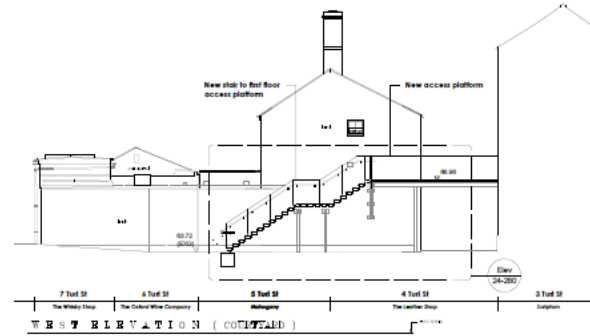
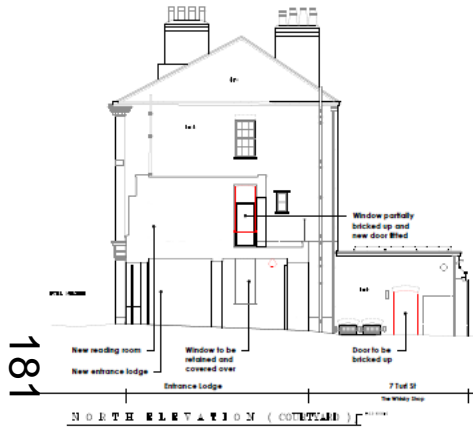
80

This architectural elevation drawing depicts a row of historic townhouses. The style is a detailed black and white line art. The row consists of several units, each with multiple stories. The ground floor features large windows and entrances, some with decorative elements like small porticos or awnings. The upper floors are characterized by numerous windows of varying sizes, some with shutters. A prominent feature is the presence of multiple chimneys of different heights and designs, some with decorative caps. The roofline is varied, with some buildings having gabled roofs and others appearing to be part of a larger structure. The drawing uses fine lines to represent architectural details like moldings, sills, and masonry. The overall composition is a horizontal cross-section of the townhouse row, showing the facade from a street-level perspective.

S O U T H E L E V A T I O N (H I G H S T R E E T)

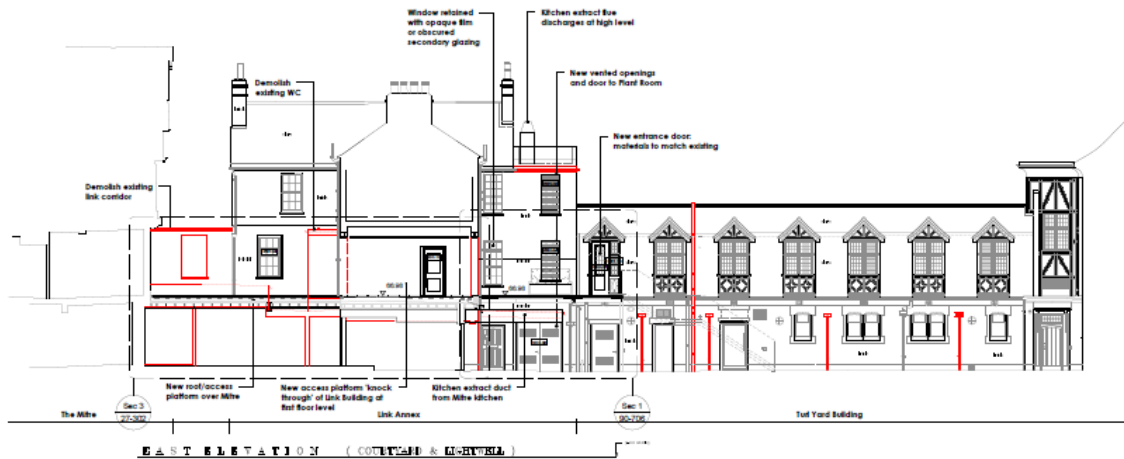
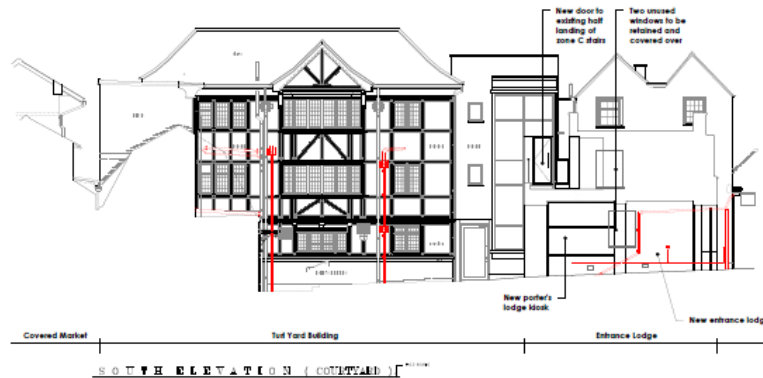
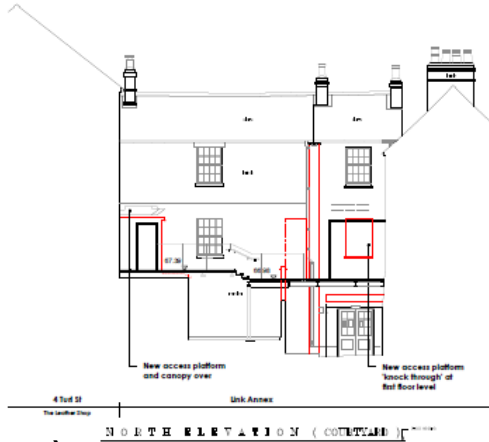
Proposed elevations – Zone A Courtyard

www.oxford.gov.uk



Proposed elevations – Zones B & C Courtyard

www.oxford.gov.uk

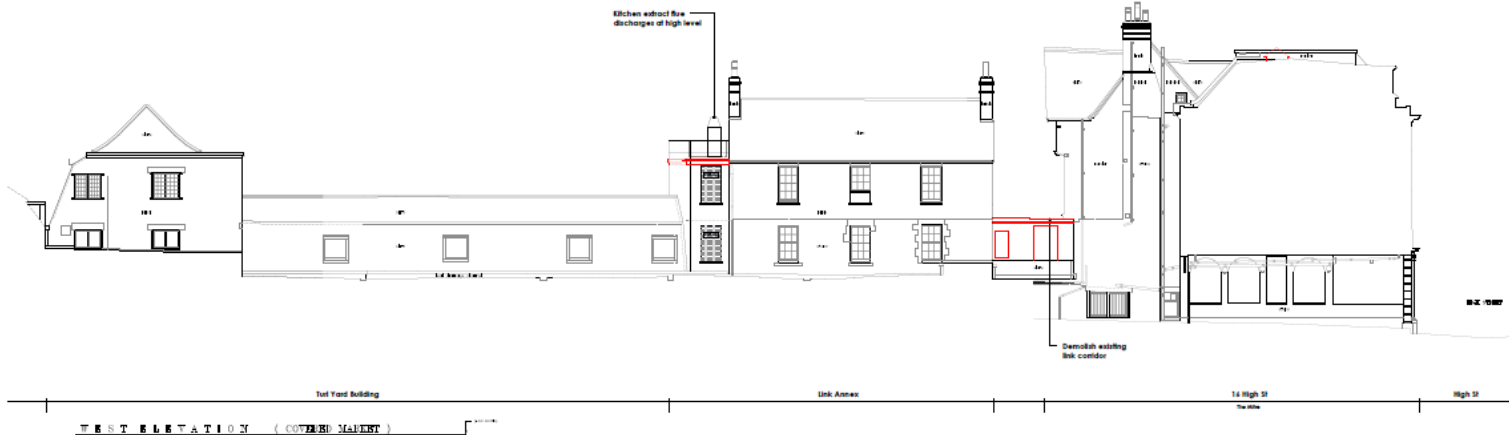
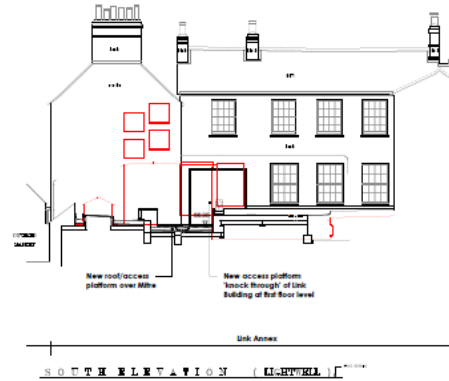


Proposed elevations – Zones B & C Lightwells

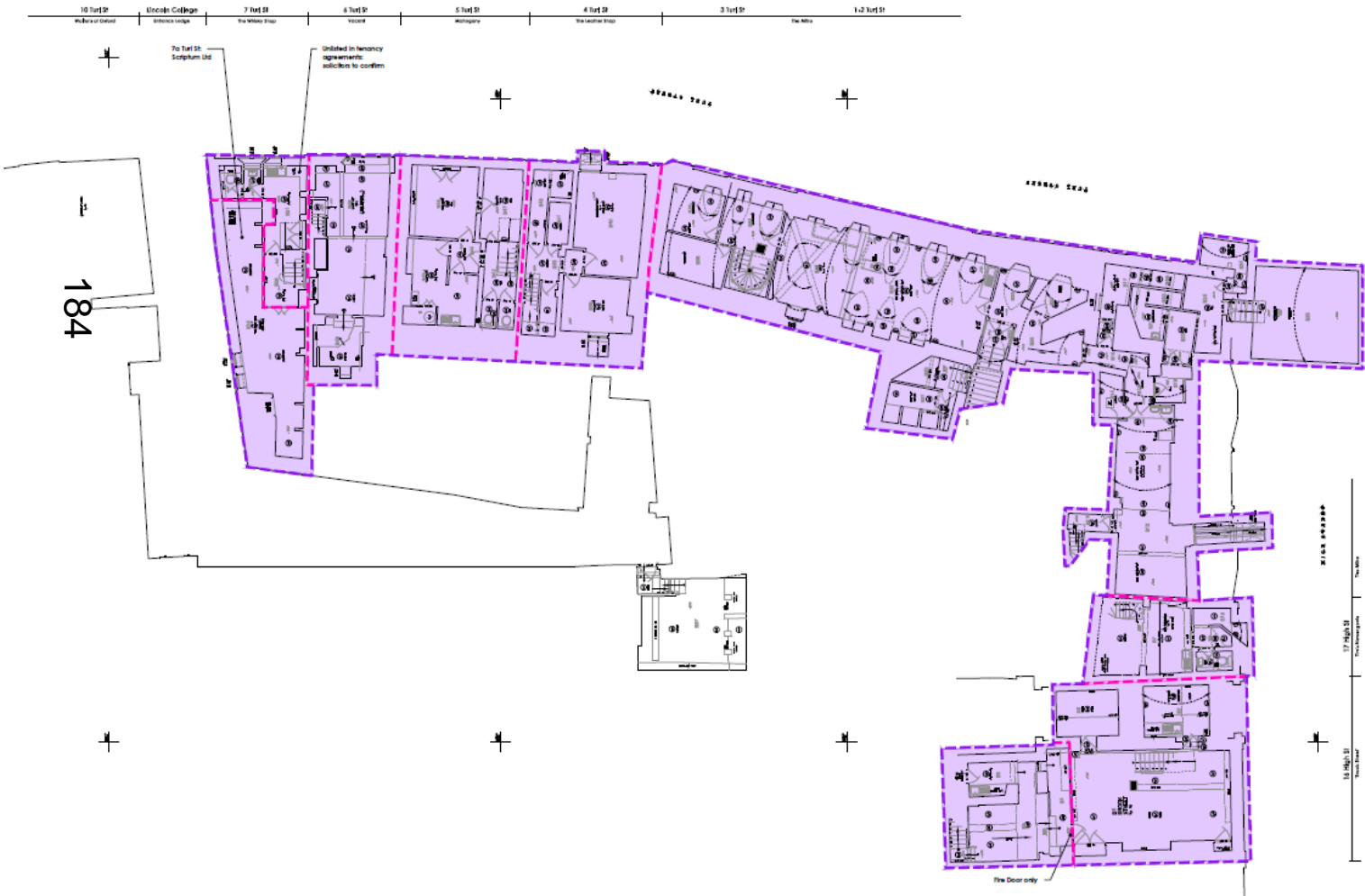
www.oxford.gov.uk



183



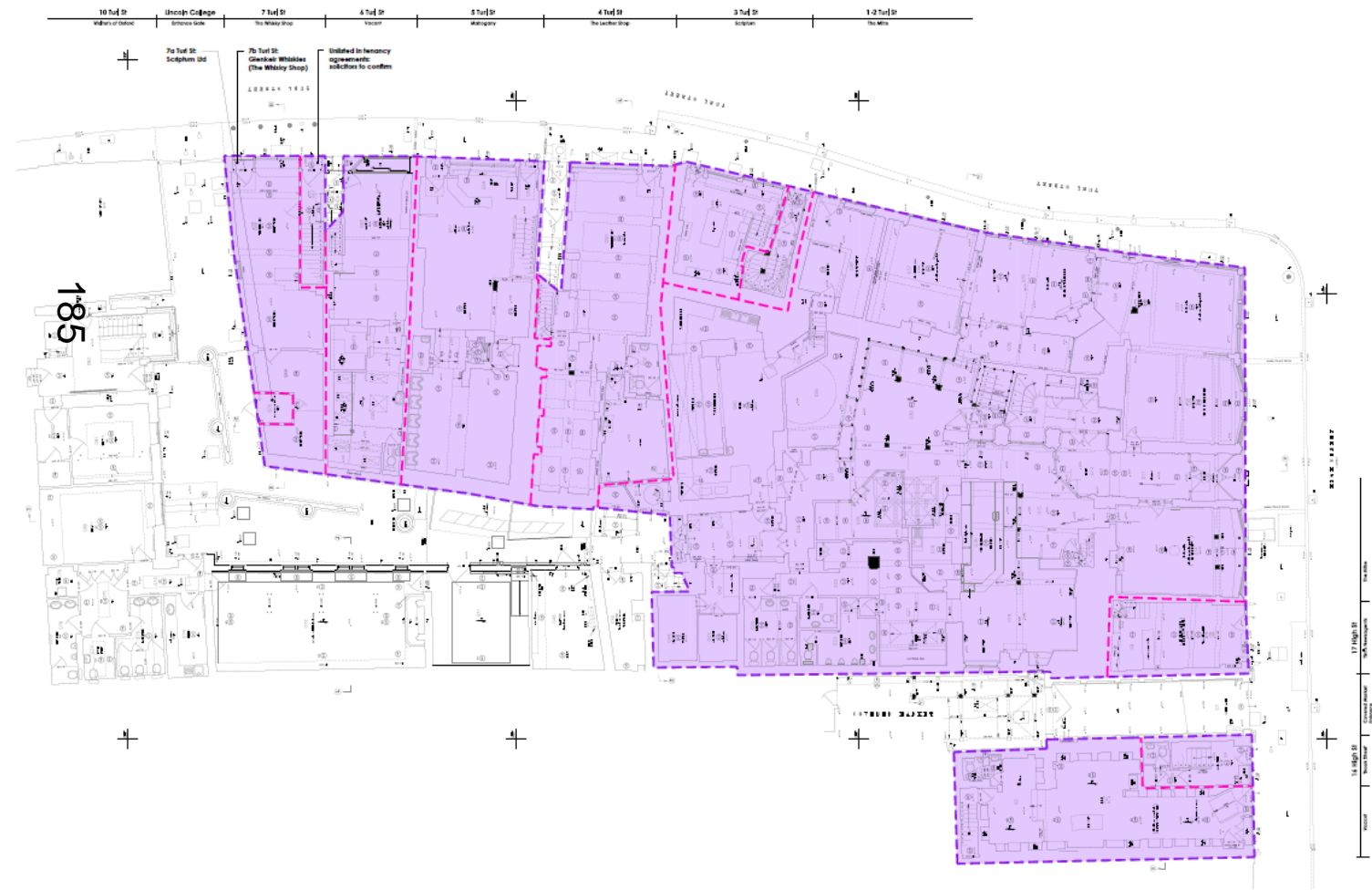
Existing basement plan



www.oxford.gov.uk



Existing ground floor plan



www.oxford.gov.uk



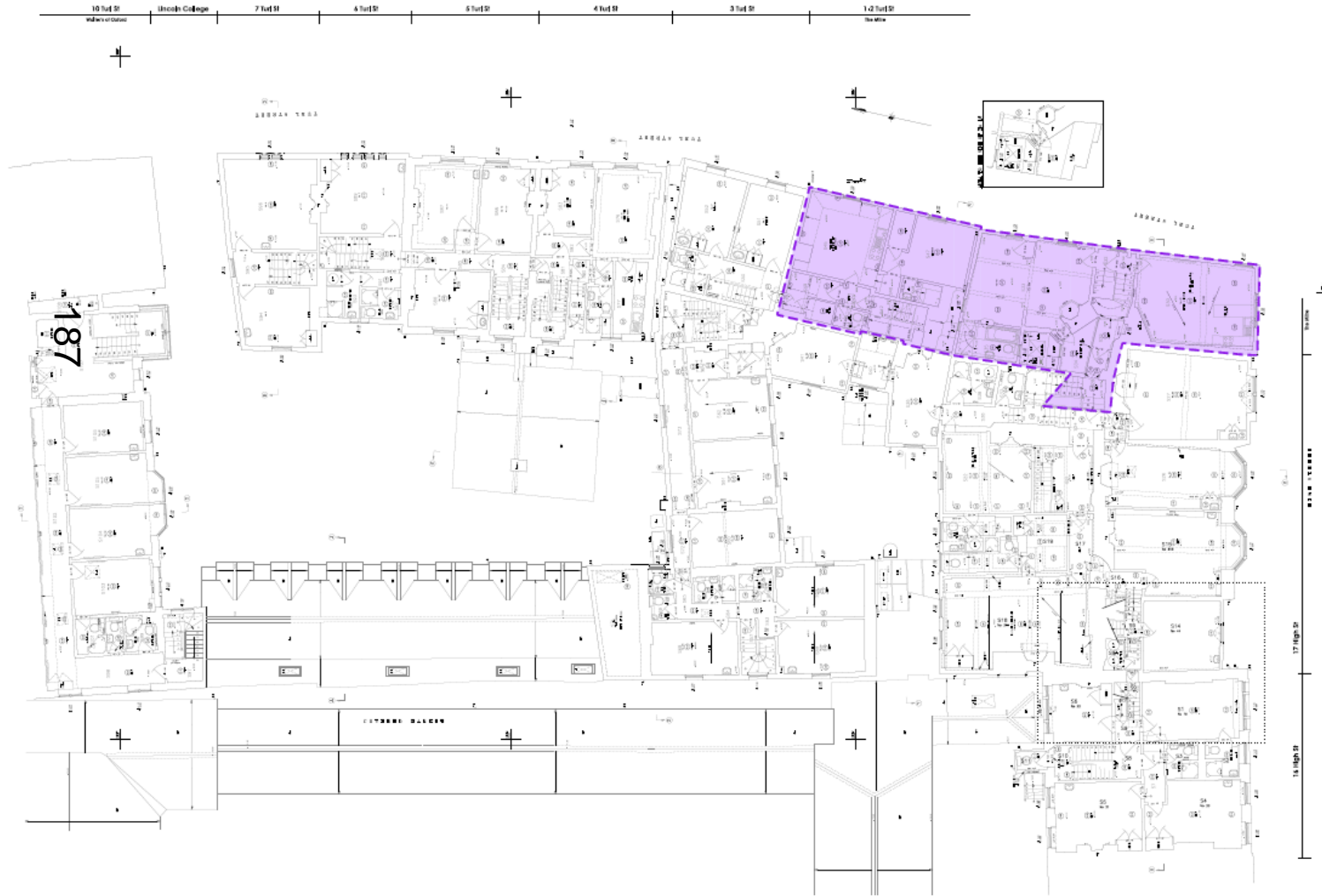
Existing first floor plan



www.oxford.gov.uk



Existing second floor plan



www.oxford.gov.uk



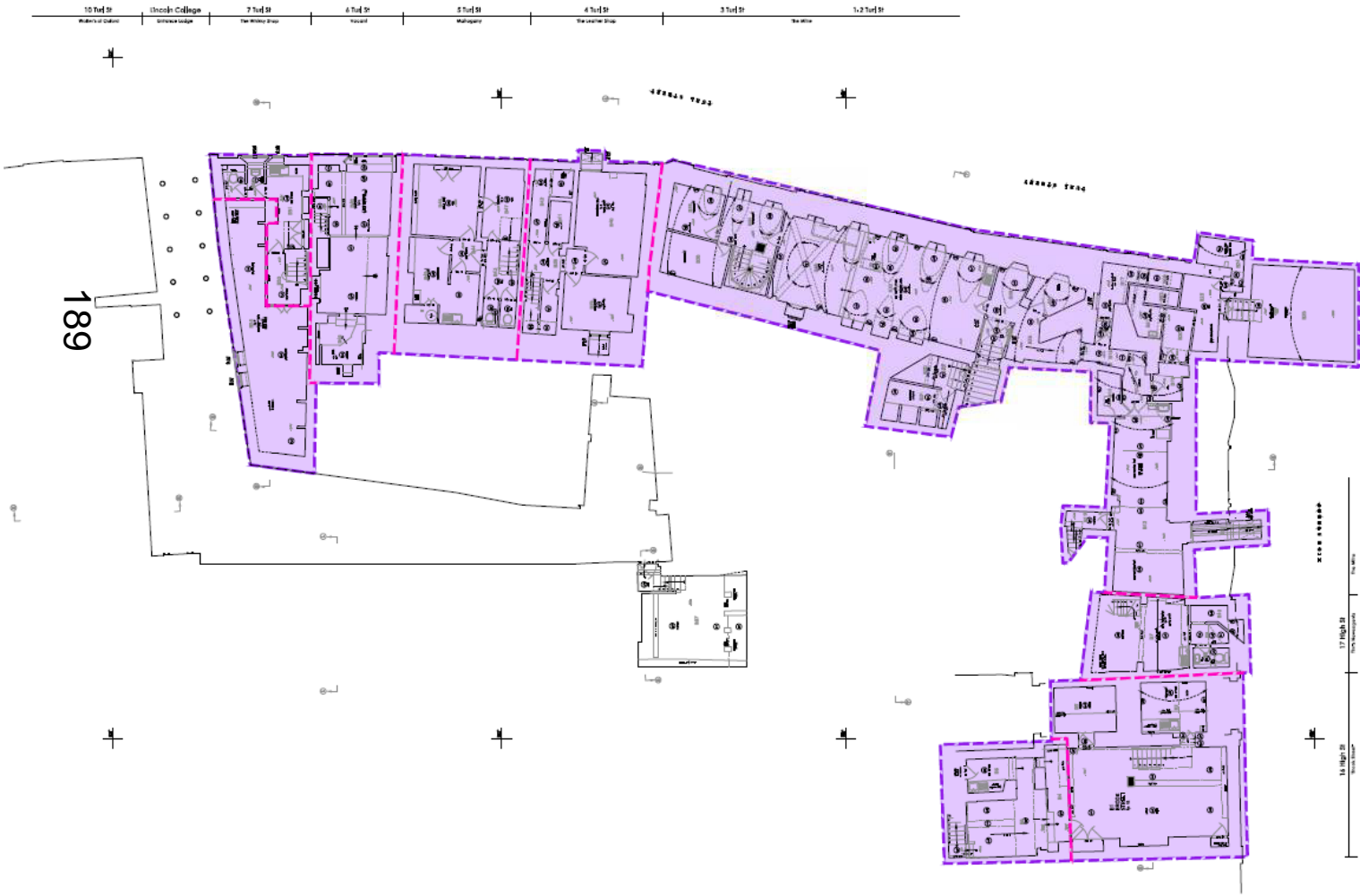
Existing third floor plan



www.oxford.gov.uk



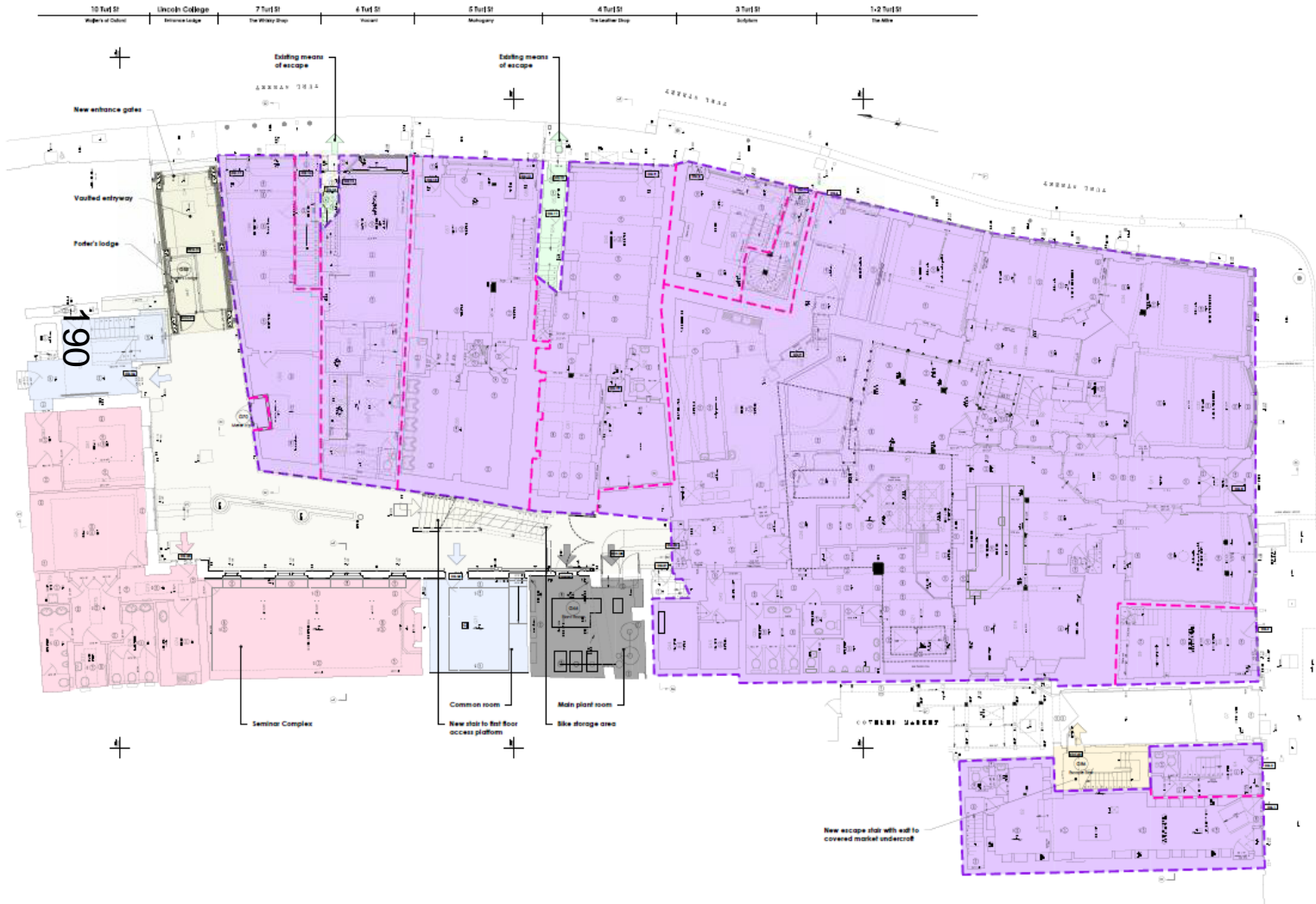
Proposed basement plan



www.oxford.gov.uk



Proposed ground floor plan



www.oxford.gov.uk



Proposed first floor plan



www.oxford.gov.uk



Proposed second floor plan



www.oxford.gov.uk





This page is intentionally left blank